



PUNCH CLEARANCE & CSU SPECIALIZED TECHNICAL SERVICE PROVIDER

INTRUST ENERGY SOLUTION (IES), a verified offshore plant PUNCH, CSU(Commissioning & Start-Up Test) and Carry Over Work specialist, proposes a Win-Win partnership with your company. We guarantee project success with 12 years of specialized experience and global vendor-certified technical expertise.

January 2026

INTRUST ENERGY SOLUTION Co., Ltd.

TABLE OF CONTENTS

- 1. Company Overview**
 - 2. Project Performance and Key Customers**
 - 3. IES Core Competencies and Differentiation Factors (Specialization / Organizational Structure)**
 - 4. HSE Management System**
 - 5. Certifications and Awards (Customer Recommendations)**
 - 6. Proposed Cooperation Services**
-

COMPANY OVERVIEW

Verified Offshore Plant PUNCH RECTIFICATION & CSU Specialist

Basic Company Information

- **Founded:** June 2015 (12 years of specialized experience)
- **Headquarters:** Geoje, Gyeongnam Province
- **Credit Rating:** BBB
- **Annual Revenue:** 35 Million USD (2025)
- **Workforce:** 628 employees total (Oct 2025)

Core Business Areas

- **PUNCH Clearance:** 100,000+ processing experience
- **Electrical/Instrumentation:** Cable termination, wiring, Loop Test and instrumentation expertise
- **Commissioning & Start-Up Test:** Rotating eqp't Alignment (Motor/Pump), Vibration analysis and performance verification
- **Preservation:** On-site/Warehouse Mechanical and E&I items(Valve, Panel/JB, Instruments preservation)



10+

FLNG, FPSO, FPU
Specialized
Experience

100,000+

PUNCH Processing Cases

628

Professional Staff

3

3 Simultaneous Ongoing Projects

PROJECT PARTICIPATION PERFORMANCE

Verified Project Execution Capability and Outstanding Achievements



2015.06 - 2017.08

- Aasta Hansteen Project (FPSO, Equinor)
- Hyundai Heavy Industries



2017.03 - 2019.08

- TCO Project (Chevron)
- DSME



2017.05 - 2019.08

- AI NASR Project (ADNOC)
- Hyundai Heavy Industries



2018.03 - 2020.01

- PFLNG-2 Project (Petronas)
- Samsung Heavy Industries

HHI, SHI, DSME : FAT, RI, MC, ATEX Punch, Preservation, CSU Support



2021.02 - 2022.04

- Ruby FPSO Project (Reliance)
- Samsung Heavy Industries



2019.06 - 2019.11

- LG Chemical Project
- LG Chemical Co.

LG CHEM : GTG Upgrading work



2019.03 - 2021.11

- Coral South FLNG Project(ENI)
- Samsung Heavy Industries



2018.06 - 2019.05

- Mad-dog 2 Project (BP)
- Samsung Heavy Industries



2022.10 - On going

- P-79 FPSO Project (Petrobras)
- HANWHA OCEAN



2022.11 - 2024.06

- Gallaf Project (NOC)
- HANWHA OCEAN



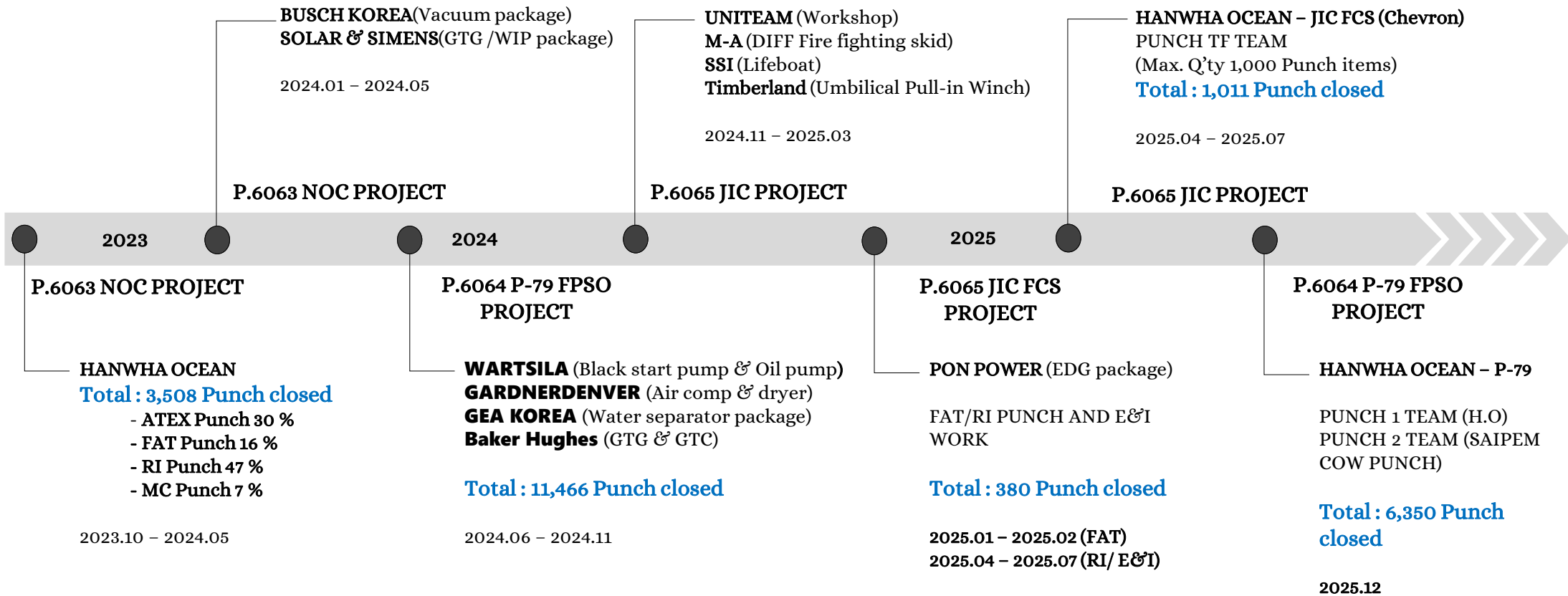
2024.01 - On going

- J-IC FCS Project (Chevron)
- HANWHA OCEAN

HANWHA OCEAN : Production Outfitting Installation, FAT, RI, MC, ATEX Punch, Preservation, CSU Support, Carry-over Work execution

PROJECT PARTICIPATION PERFORMANCE - RECENT 3 YEARS

Vendor Package Participation and Work Processing Status



KEY CUSTOMERS AND PARTNERSHIPS

Verified Cooperative Relationships with Global Shipbuilders

Samsung Heavy Industries



- Verified cooperation experience
- Completed 4 major projects:
PFLNG-2, BP Mad-dog, Coral South FLNG, Ruby FPSO
- Services: Punch Clearance, Preservation, FMS, CSU support

Daewoo Shipbuilding & Marine Engineering



- Major project participation
- TOC Chevron Project execution
 - **BHGE** Equipment GTG, GTC Punch dedicated operations (field installation, construction, and PUNCH rectification)

HANWHA OCEAN



- Sole PUNCH vendor of Hanwha Ocean Quality Department
- Executed major THREE Offshore projects simultaneously:
P-79 FPSO, NOC Platform, J-IC FCS Project, Wind turbine vessel
- 19,953 PUNCH processing achievements

Hyundai Heavy Industries



- Registered as external vendor since 2015
- Aasta Hansteen Project, NASR Project, King's Quay FPS Project
 - Registered as 1st-tier cooperation vendor for punch closing
 - Zero Defect achievement

IES CORE COMPETENCIES

Global Vendor-Certified Experts with Cutting-Edge Technology

Global Vendor Training Certifications

GE (12) | Baker Hughes (8) | Siemens (15) | Wartsila (6) | Solar Turbines (4)

Baker Hughes

- Registered as 1st-tier cooperation vendor
- GTG/GTC Package dedicated operations
- Awarded Best Partner Award (2024)

Siemens

- Authorized service partner
- Electrical control system expertise
- 100% technical standard compliance

GE

- 10-year cooperation partner
- GTG/GTC system specialization
- Grade A quality audit achievement

Wartsila & Emerson Atomation Control

- Certified service partner
- Engine system specialization
- Black Start Pump, IGC expertise

Specialized Equipment and Measurement Instruments

- Shaft alignment measurement device
- Vibration analyzer, insulation resistance tester
- Megohmmeter, loop calibrator
- Portable milling machine, boring machine, FMS torque machine
- Hydraulic/pneumatic tester, leak detector
- Rust preventive treatment equipment
- Nitrogen purging system
- Humidity control system

PUNCH PROCESSING EXPERTISE

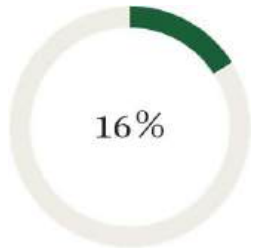
Systematic Non-Compliance Management System and Outstanding Performance

PUNCH Processing Performance (Last 3 Years)

Total: 19,953 cases

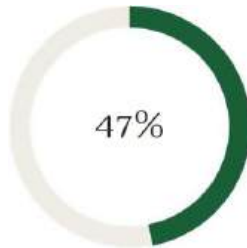
NOC (3,508) + P-79 (11,466) + J-IC (1,011) + Others (3,968)

PUNCH Breakdown by Type



FAT PUNCH: 16%
(Pre-shipment factory inspection findings)

99.2%
Processing Accuracy



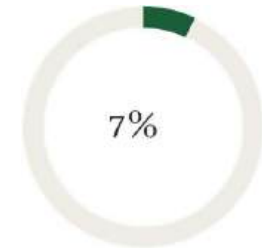
RI PUNCH: 47%
(Non-compliance discovered after installation preparation)

95.8%
Recurrence Prevention Rate



ATEX PUNCH: 30%
(Explosive atmosphere-related)

2.3 Days
Emergency Processing Time



MC PUNCH: 7%
(Mechanical completion-related)

100%
Schedule Adherence

IES DIFFERENTIATION FACTORS

Competitive Advantage through Proprietary Technology and Systems

PMS (Punch Management System) - In-House Development

Revolutionary improvement over traditional manual management –
real-time monitoring and integrated management

Real-Time Monitoring

- Immediate work progress sharing
- Real-time material status confirmation
- Automatic weekly/monthly statistical analysis generation
- Work performance measurement

Safety Management System

- Work approval system
- Pre-work safety element inspection
- Implementation of real-name work system
- Traceable responsibility assignment

Communication System

- Case-specific non-compliance chatting
- Work record archiving
- Powerful search system
- Project-based classification management

Systematic Quality Control

- 30 types of inspection sheets
- All-equipment compatible
- Periodic customized inspection
- Complete dedicated material list

Global Network

Overseas Business Locations

- Singapore, Kuala Lumpur, Malaysia
- Tianjin, China (2026)

International Project Experience

- UAE: Al-Nasr Project (Brownfield – 151pax Manpower Support)
- Singapore: Seatrium Shipyard (Bacalhau FPSO, Equinor)

TECHNICAL SERVICE SPECIALIZATION AREAS

Comprehensive Technical Capability Covering All Marine Plant Disciplines

Electrical/Instrumentation

- Cable laying and wiring work
- HV PANEL wiring and inspection
- MCT modification and upgrade
- Instrument installation and testing
- Loop test and calibration
- Insulation resistance measurement (up to 13.8kV)

Preservation Technology

- Long-term storage equipment performance maintenance
- Nitrogen purging system management
- Rust/moisture preventive treatment expertise
- VpCI, VCI coating
- Periodic inspection and preventive maintenance
- NACE, SSPC standard compliance

Mechanical

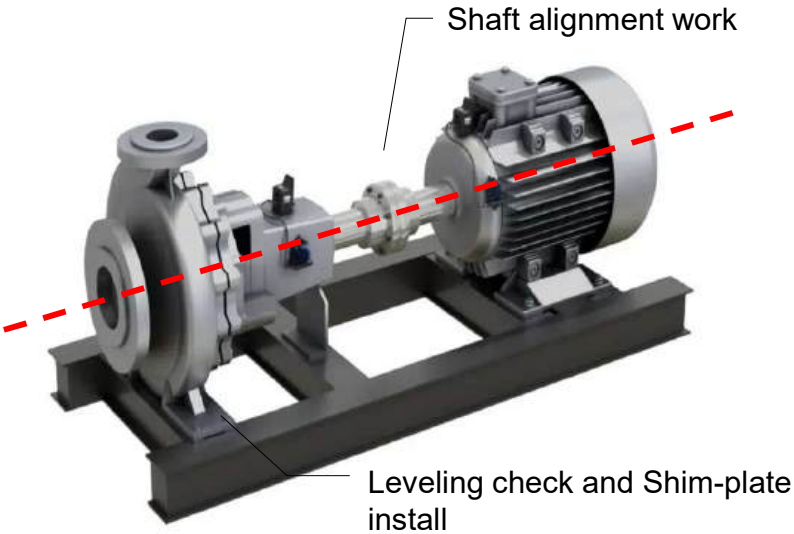
- Shaft alignment adjustment
- Base plate milling work
- Rotating eqp't maintenance (Motor, Pump)
- Comprehensive package equipment management
- Precision machining and field custom fabrication
- Vibration analysis and performance verification

Piping/Instrumentation

- Tube replacement and reinstallation
- Leak test and pressure testing
- Insulation application
- Vacuum system management
- Flow mark and labeling
- Gap test specialized technology



Technical Service (Alignment)



Tag No	Description
B-2-1234001-03A	Amine Stripper Reflux Pump A
B-Z-1234001-03B	Amine Stripper Reflux Pump B
B-UT-1261001-02	CIP pump
B-Z-1234001-01A	Lean Amine Booster Pump A
B-Z-1234001-01B	Lean Amine Booster Pump B
B-Z-1234001-02A	Lean Amine Circulation Pump A
B-Z-1234001-02B	Lean Amine Circulation Pump B
B-1261001-02	Low Flow CIP Pump
UC-1233001A	Molecular Comp' A
UC-1233001B	Molecular Comp' B
B-5331001B	Produced WTR booster pump B
B-5331001C	Produced WTR booster pump C
B-5331002A	Recirculation System Pump A
B-5331002B	Recirculation System Pump B
B-5331002C	Recirculation System Pump C
B-5133001A	Well Service Pump A
B-5133001B	Well Service Pump B



BEFORE



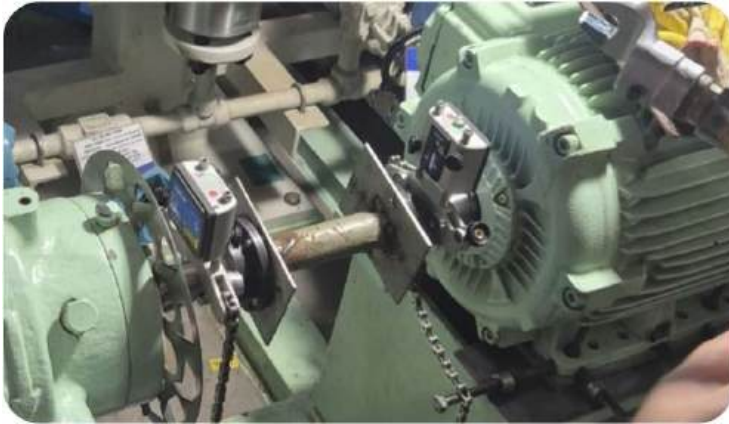
AFTER

Performed shaft alignment for pump motors, including horizontal/vertical and angular adjustments, ensuring precise data measurement and calibration.

During Commissioning phase, IES executed x64off Pump/Motor alignment adjustment in July-Oct 2025.

Technical Service (Alignment)

Utilized laser alignment systems to capture precise data, diagnosing horizontal and vertical angular shaft variances.



Technical Service (Alignment)

Shaft alignment work execution using laser alignment devices by IES mechanical technicians.



Technical Service (Alignment)

Data extraction and prepare the test report after alignment calibration for CPY inspection.



Machine alignment information

Asset ID: Well Service Pump A. B-5133001 A
 Notes: Final alignment inspection

Dimensions mm

Measurements mm

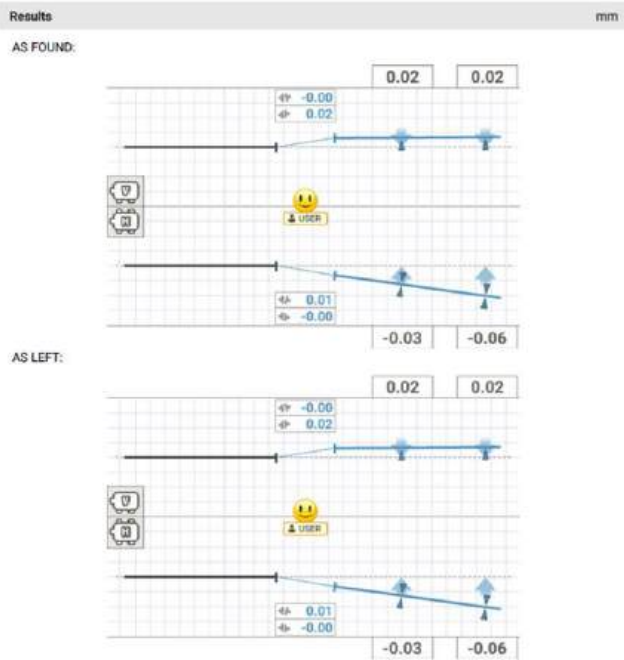
AS FOUND:

Coupling #1	Date	Type	V		H	
			↔	↔	↔	↔
📷	10.09.2025 16:48:07	IntelliPASS	-0.00	0.02	0.01	-0.00

Measurements mm

AS LEFT:

Coupling #1	Date	Type	V		H	
			↔	↔	↔	↔
📷	10.09.2025 16:48:07	IntelliPASS	-0.00	0.02	0.01	-0.00



Technical Service (Electric loop test and instrument test)

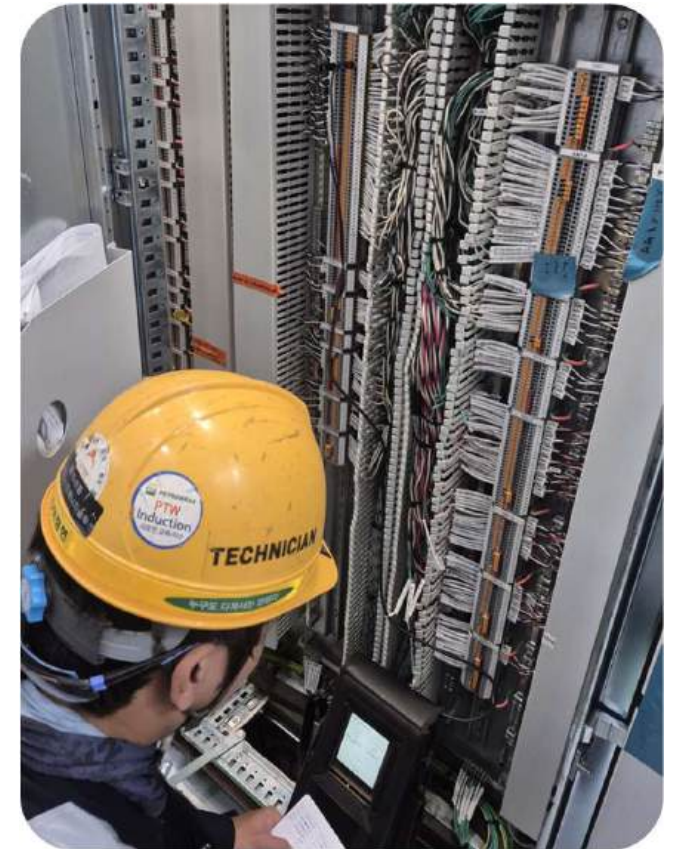
Communicate with field-installed instruments (pressure, temperature, etc.) to manage **configuration**, perform **calibrations**, and execute **troubleshooting** to verify instrument devices health and control. Resistance test execution to verify the integrity of the cable and defect any shorts or damages.



Pressure calibrator



Multi-tester



Field communicator

Technical Service (Electric loop test and instrument test)

Conduct diagnostic testing and inspection utilizing pressure calibrators, multimeters, and field communicators.



IES Commissioning tools & equipment inventory



FLUKE Multimeters
Q'ty : x12off
Total Price Value :
8,400.00 USD



HIOKI Megatester
Q'ty : x10off
Total Price Value :
3,500.00 USD



HIOKI Voltage Detector (Non-contact)
Q'ty : x20off
Total Price Value :
1,800.00 USD



Emerson Field Communicator
Q'ty : x2off
Total Price Value :
32,000.00 USD



Pressure Calibrator
Q'ty : x2off
Total Price Value :
24,000.00 USD



Loop Calibrator
Q'ty : x2off
Total Price Value :
4,800.00 USD



Hydraulic Torque Pump (700 Bar)
Q'ty : x1off
Total Price Value :
7,900.00 USD



Hydraulic Torque Wench (7,430 N.m)
Q'ty : x1off
Total Price Value :
8,500.00 USD



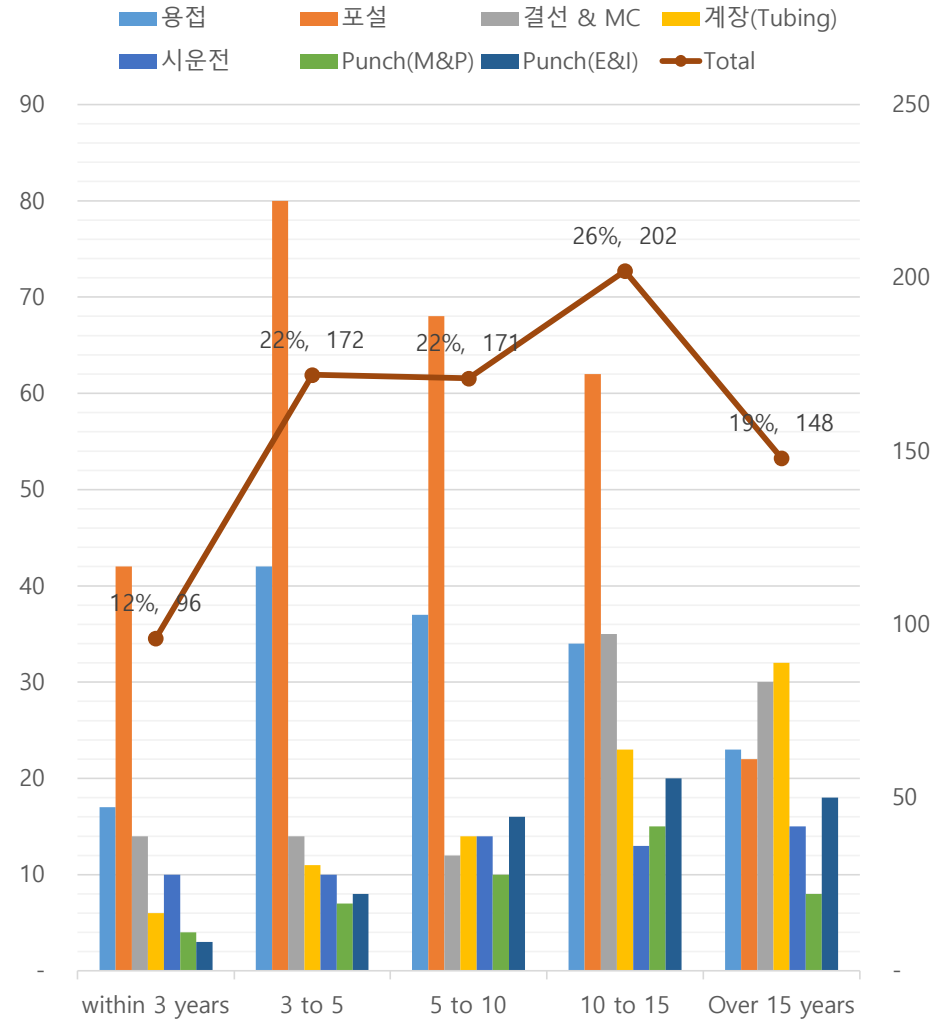
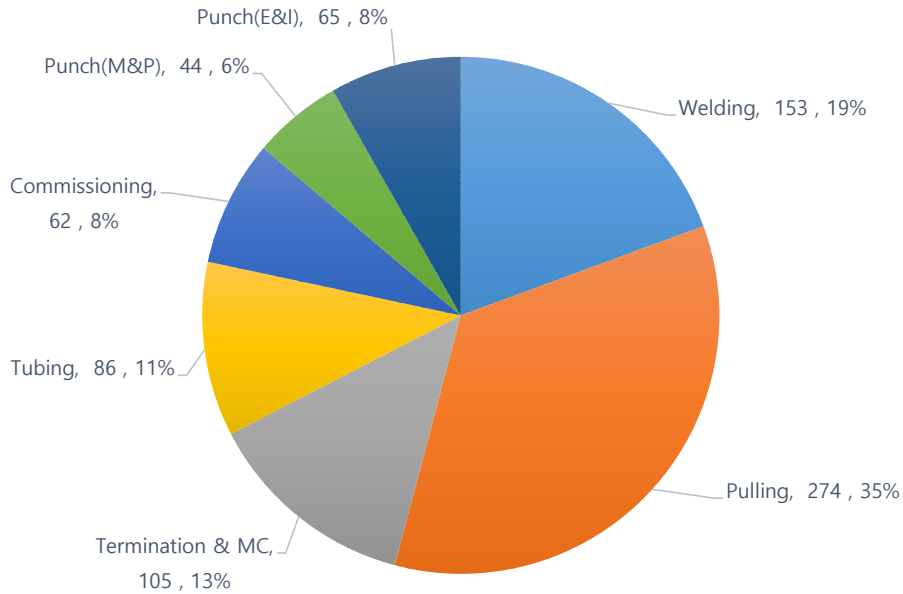
Mobile PSV & ValveTest Unit (On-site execution type)
Test medium : N2 or Water
Q'ty : x1set
Total Price Value :
140,000.00 USD



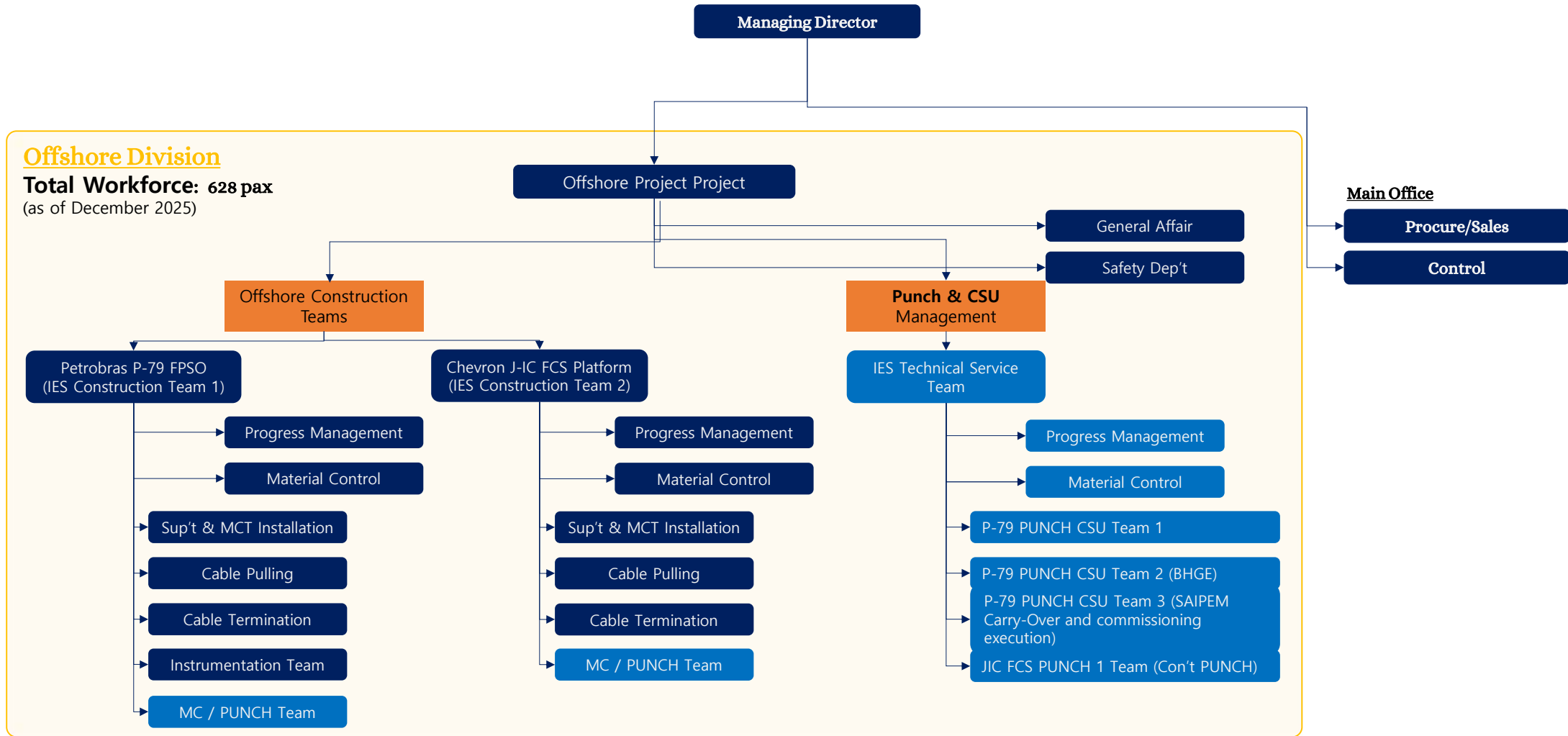
IES offers a range of commissioning test tools and equipment for the project on a complimentary rental basis, with a total value of **239,000.00 USD.**

IES – Manpower Workforce Capability

Part	Total	Years of experience (Manpower)				
		within 3 years	3 to 5	5 to 10	10 to 15	Over 15 years
Welder	153	17	42	37	34	23
Cable Puller	274	42	80	68	62	22
Cable Terminator & MC	105	14	14	12	35	30
Instrument (Tubing installer)	86	6	11	14	23	32
Commissioning Specialist	62	10	10	14	13	15
Punch Technicain (Mech. & Piping)	44	4	7	10	15	8
Punch Technician (Electric & Istrument)	65	3	8	16	20	18
Total	789	96	172	171	202	148
	100%	12%	22%	22%	26%	19%

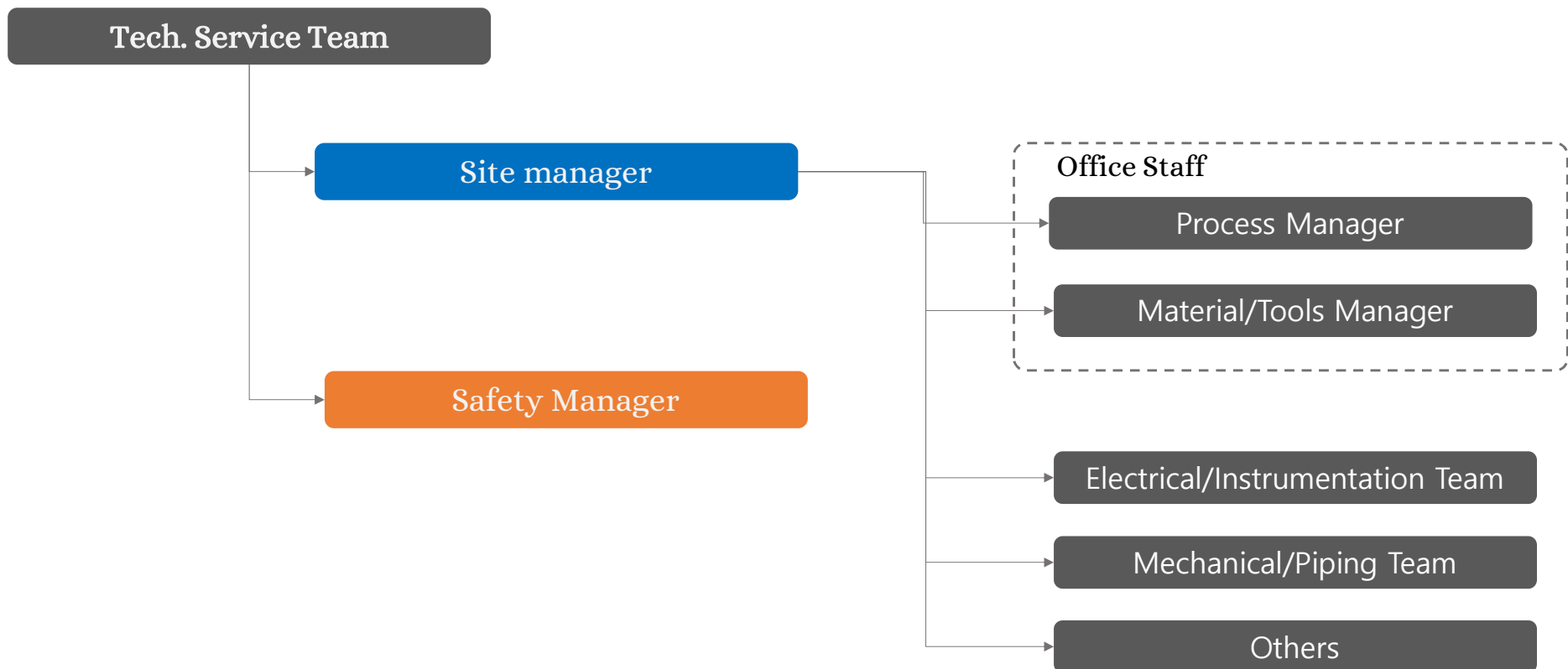


IES ORGANIZATIONAL STRUCTURE (2025)



IES PUNCH TEAM ORGANIZATIONAL STRUCTURE

Safety management operates as a dedicated organization with accident prevention and response as top priority. Emergency TIGER TEAM operational structure ensures rapid response.



PROPOSED COOPERATION SERVICES

Customized PUNCH and Technical Service Solutions

Dedicated PUNCH Operation Service

- Project-specific dedicated TF TEAM formation
- Priority processing of A/B grade PUNCH items
- 24-hour emergency response system
- Grade-specific professional personnel deployment
- Vendor-specific specialized team operation

On-Site Modification and Testing

- Immediate on-site response and problem resolution
- Design standard-compliant technical support
- Comprehensive performance verification testing
- Field-customized component fabrication
- Precision machining and repair

PRESERVATION Service

- Performance maintenance during long-term storage
- Regular inspection and preventive maintenance
- Customized preservation by environmental conditions
- International standard compliance processing
- Maximum 2 years 7 months experience

Personnel Deployment Plan

- Flexible allocation by project scale
- Skilled technicians by specialization field
- Schedule-aligned personnel increase/decrease
- Global vendor-certified technicians
- Maximum 628-person personnel pool available

Quality Assurance Commitment

Direct vendor communication, Proactive issue identification, 100% customer requirement reflection

HSE MANAGEMENT SYSTEM

Safety First - Zero Accident Achievement

- Multiple projects with zero-accident record
- Chevron quality audit approval

International Certifications

- ISO 9001: Quality Management System
- ISO 14001: Environmental Management System
- ISO 45001: Occupational Health and Safety Management System
- Domestic electrical construction license

Safety Management Activities

- Safety Champion: Voluntary safety culture
- TBM+ Activities: Pre-work risk assessment
- Daily Safety Inspection: On-site safety patrols
- Multicultural Management: Foreign worker training

Awards and Recognition

- 2022: Export Promising Small/Medium Enterprise
- 2021: Export Tower Award–Mil. Dollar
- Chevron: Quality & HSE Award
- HANWHA OCEAN: Safety Management Excellence Organization

Professional Training System

- Regular global vendor training participation
- International certification acquisition (IPC, NACE, AWS)
- Regular safety expert lectures
- Company-wide risk assessment participation



We sincerely thank everyone for their dedication to maintaining quality throughout the year. Your efforts have enabled us to uphold high standards. We look forward to your continued excellence in the new year, leading the FCS project to success.

We extend our deepest gratitude to everyone at IES for their commitment to our project. We wish you health, peace, and happiness in the coming year. We appreciate your ongoing cooperation and contributions, and we look forward to achieving more successful projects together.

This coupon is a gift for those who have worked hard to improve the quality of our project. It is given to the company selected for their efforts in enhancing our project quality over the past year, so please distribute it evenly among the IES workers who have contributed to quality improvement.

Thank you once again for your hard work and dedication. Let's make the upcoming year even more successful!

J-IC FCS Quality Team

J-IC: Let Quality be our Legacy



HSE Management Activities



Establishment of independent safety policies



Safety training by invited experts



Safety education material distribution



Periodic safety training



Coral Project Safety Award (Top Safety Cooperation Vendor Selection)



Statoil Project Safety Award (Excellent Safety Cooperation Vendor)



ISO 45001 Occupational Health and Safety Certification



Strict hygiene protocol compliance (personal health management)

IES Safety Training and Activities



Monthly regular safety training



Customized training by department/team



TBM (Toolbox Meeting) activities

IES Safety Training and Activities



Coral South FLNG HSE Leadership Award in SHI



Philanthropy and Humanitarian Aid

"The Korean Committee for **UNICEF** announced that **IES** has donated **10 million KRW** to support the healthy growth and development of children worldwide."



"IES donated emergency relief funds to support refugees displaced by the war in Ukraine."



"The company **IES** practiced the spirit of sharing by organizing a **rice distribution volunteer event** for vulnerable groups in Cambodia."



우크라이나 전쟁 피난민들을 위해 성금을 기부한 ㈜인트라스트에너지솔루션 김성취 대표(사진=사단법인 한말

ISO Certification

ISO 9001:2015, ISO 14001:2015, OHSAS 18001:2007

Certificate of Registration

G-CERTI Certificate

herby certifies that

INTRUST ENERGY SOLUTION CO., LTD.

106-1, Hwajam-ro, Dong-gu, Ulsan, Korea.




has been audited and certified as meeting the requirements c/- Scope of registration

ISO 9001:2015 Quality Management Systems

PROVISION OF PROJECT SUPPORT SERVICES INCLUDING
MANPOWER SUPPLY, HSE TRAINING, PROCUREMENT,
ACCOMMODATION, THIRD PARTY INSPECTION, ENGINEERING,
LOGISTICS, CONSULTING Etc. TO OIL&GAS DEVELOPMENT
INDUSTRIES AND SHIPBUILDING

Certificate No : GKC - 1033 - QC
Valid Period : 18 Jan. 2019 - 17 Jan. 2022
Initial Date : 18 Jan. 2019 Issue Date : 18 Jan. 2019
Expiry Date : 17 Jan. 2022 Code : 35

Signed for and on behalf of G-CERTI
President I.K.Cho

Certificate of Registration

G-CERTI Certificate

herby certifies that

INTRUST ENERGY SOLUTION CO., LTD.

106-1, Hwajam-ro, Dong-gu, Ulsan, Korea.




has been audited and certified as meeting the requirements c/- Scope of registration

ISO 14001:2015 Environmental Management Systems

PROVISION OF PROJECT SUPPORT SERVICES INCLUDING
MANPOWER SUPPLY, HSE TRAINING, PROCUREMENT,
ACCOMMODATION, THIRD PARTY INSPECTION, ENGINEERING,
LOGISTICS, CONSULTING Etc. TO OIL&GAS DEVELOPMENT
INDUSTRIES AND SHIPBUILDING

Certificate No : GKC - 1033 - EC
Valid Period : 18 Jan. 2019 - 17 Jan. 2022
Initial Date : 18 Jan. 2019 Issue Date : 18 Jan. 2019
Expiry Date : 17 Jan. 2022 Code : 35

Signed for and on behalf of G-CERTI
President I.K.Cho

Certificate of Registration

G-CERTI Certificate

G-CERTI herby certifies that

INTRUST ENERGY SOLUTION CO., LTD.

106-1, Hwajam-ro, Dong-gu, Ulsan, Korea.

has been audited and certified as meeting the requirements c/- Scope of registration



OHSAS 18001:2007 Occupational Health and Safety Management Systems

PROVISION OF PROJECT SUPPORT SERVICES INCLUDING
MANPOWER SUPPLY, HSE TRAINING, PROCUREMENT,
ACCOMMODATION, THIRD PARTY INSPECTION, ENGINEERING,
LOGISTICS, CONSULTING Etc. TO OIL&GAS DEVELOPMENT
INDUSTRIES AND SHIPBUILDING

Certificate No : GKC - 1033 - OHC
Valid Period : 18 Jan. 2019 - 17 Jan. 2022
Initial Date : 18 Jan. 2019 Issue Date : 18 Jan. 2019
Expiry Date : 17 Jan. 2022 Code : 35

Signed for and on behalf of G-CERTI
President I.K.Cho

The organization shall obtain certification against ISO 45001:2018 by 11. Mar. 2021.
If not, the present certificate shall cease to be valid from 12. Mar. 2021.

CONCLUSION

"IES is committed to establishing a **mutually beneficial, long-term partnership** with your company. With 12 years of specialized experience in upstream construction and a track record of verified technical expertise, we believe that **nothing is impossible**. Let IES be your partner of choice, and we will turn your vision into reality."

Thank you for your consideration.

Scott Kim
Managing Director

+82-10-2470-9005
scott.kim@intrustenergysolution.com
